

Product Datasheet

MBD4 Antibody (orb99204)

Description

MBD4 Antibody

Species/Host

Rabbit

Reactivity

Human, Mouse, Rat

Conjugation

Unconjugated

Tested

WB

Applications

Immunogen

A synthetic peptide corresponding to a sequence at the C-terminus of human MBD4 (566-580aa YHDWLWENHEKLSLS), identical to the related rat and mouse sequences.

Form/Appearance

Lyophilized

Concentration

Adding 0.2 ml of distilled water will yield a concentration of 500 µg/ml.

Storage

Store at -20°C for one year from date of receipt. After reconstitution, at 4°C for one month. It can also be aliquotted and stored frozen at -20°C for six months. Avoid repeated freeze-thaw cycles.

Note

For research use only

Application notes

WB: The detection limit for MBD4 is approximately 1ng/lane under reducing conditions. Tested Species: In-house tested species with positive results. Predicted Species: Species predicted to be fit for the product based on sequence similarities. Other applications have not been tested. Optimal dilutions should be determined by end users. . Add 0.2ml of distilled water will yield a concentration of 500ug/ml.

Isotype

Rabbit IgG

Clonality

Polyclonal

MW

66051 MW

Uniprot ID

095243

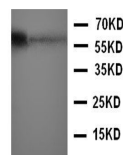
Dilution Range

Western blot, 0.1-0.5µg/ml, Human, Rat, Mouse

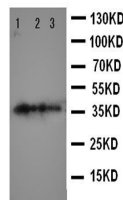
Expiration Date

12 months from date of receipt.

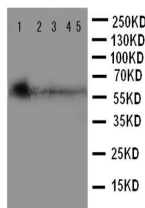
1 2 3 — 130KD



Western blot analysis of Lane 1: Rat Bra...



Western blot analysis of Lane 1: Recombi...



Western blot analysis of Lane 1: Rat Bra...