

Product Datasheet

Laminin antibody (orb98359)

Description

Rat monoclonal to Laminin

Species/Host

Rat

Reactivity

Human, Mouse, Porcine

Conjugation

Unconjugated

Tested

ICC, IF, IHC-Fr

Applications
Storage

Storage: The antibody is shipped at ambient temperature and may be stored at +4°C. For prolonged storage prepare appropriate aliquots and store at or below -20°C. Prior to use, an aliquot is thawed slowly in the dark at ambient temperature, spun down again and used to prepare working dilutions by adding sterile phosphate buffered saline (PBS, pH 7.2). Repeated thawing and freezing should be avoided. Working dilutions should be stored at +4°C, not refrozen, and preferably used the same day. If a slight precipitation occurs upon storage, this should be removed by centrifugation. It will not affect the performance or the concentration of the product

Note

For research use only

Isotype

IgG2a

Clonality

Monoclonal

Source

A5 is a rat monoclonal IgG2a antibody derived by fusion of mouse myeloma cells with spleen cells from a Fisher rat immunized with a laminin preparation from the EHS mouse tumor.

Uniprot ID

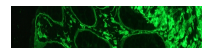
P11047

Hazard
Information

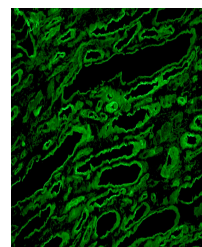
This product is intended FOR RESEARCH USE ONLY, and FOR TESTS IN VITRO, not for use in diagnostic or therapeutic procedures involving humans or animals. This product contains sodium azide. To prevent formation of toxic vapors, do not mix with strong acidic solutions. To prevent formation of potentially explosive metallic azides in metal plumbing, always wash into drain with copious quantities of water. This datasheet is as accurate as reasonably achievable, but Nordic-MUBio accepts no liability for any inaccuracies or omissions in this information.

Expiration Date

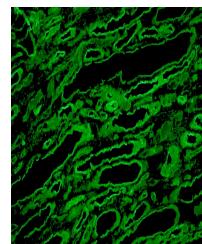
12 months from date of receipt.



Immunofluorescence staining of frozen se...



Detection of laminin in human kidney fro...



Detection of laminin in human kidney fro...