

Product Datasheet

Heparan Sulphate Proteoglycan antibody (orb98335)

Description

Rat monoclonal to Heparan Sulphate



Species/Host

Rat

Reactivity

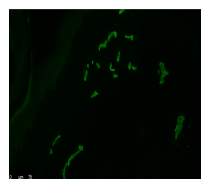
Bovine, Fish, Human, Mouse, Rat

Conjugation

Unconjugated

Tested Applications

ICC, IHC-Fr, IHC-P, IP, WB



Immunofluorescence analysis of mouse tissue with...

Preservatives

The vial contains 100 ul 1 mg/ml monoclonal purified antibody in PBS containing 0.09% sodium azide.

Form/Appearance

The vial contains 100 ul 1 mg/ml monoclonal purified antibody in PBS containing 0.09% sodium azide.

Storage

Storage: The antibody is shipped at ambient temperature and may be stored at +4°C. For prolonged storage prepare appropriate aliquots and store at or below -20°C. Prior to use, an aliquot is thawed slowly in the dark at ambient temperature, spun down again and used to prepare working dilutions by adding sterile phosphate buffered saline (PBS, pH 7.2). Repeated thawing and freezing should be avoided. Working dilutions should be stored at +4°C, not refrozen, and preferably used the same day. If a slight precipitation occurs upon storage, this should be removed by centrifugation. It will not affect the performance or the concentration of the product

Note

For research use only

Isotype

IgG2a

Clonality

Monoclonal

Source

A7L6 is a Rat monoclonal IgG2a antibody derived by fusion of X63 Ag8.653 Mouse myeloma cells with spleen cells from a Fisher Rat immunized with high molecular mass material derived from the Engelbreth-Holm-Swarm (EHS) tumor matrix containing laminin, entactin and HSPG.

Uniprot ID

P98160

Hazard Information

This product is intended FOR RESEARCH USE ONLY, and FOR TESTS IN VITRO, not for use in

Biorbyt Ltd.

7 Signet Court, Swann's Road, Cambridge, CB5 8LA, United Kingdom

Email: info@biorbyt.com | Phone: +44 (0) 1223 859-353 | Fax: +44 (0)1223 280 240

Biorbyt LLC.

68 TW Alexander Drive
Research Triangle Park
Durham, North Carolina
27709. United States

Email: info@biorbyt.com | Phone: +1 (415) 906-5211 | Fax: +1 (415) 651-8558

always wash into drain with copious quantities of water. This datasheet is as