

## Product Datasheet

### BrdU antibody (orb98204)

## Description

Mouse monoclonal antibody to BrdU

## Species/Host

Mouse

## Conjugation

Unconjugated

## Tested

## Applications

FC, ICC, IHC-Fr, IHC-P

## Preservatives

Each vial contains 100 ul 1 mg/ml purified monoclonal antibody in PBS containing 0.09% sodium azide.

## Form/Appearance

Each vial contains 100 ul 1 mg/ml purified monoclonal antibody in PBS containing 0.09% sodium azide.

## Storage

Storage: The antibody is shipped at ambient temperature and may be stored at +4°C. For prolonged storage prepare appropriate aliquots and store at or below -20°C. Prior to use, an aliquot is thawed slowly in the dark at ambient temperature, spun down again and used to prepare working dilutions by adding sterile phosphate buffered saline (PBS, pH 7.2). Repeated thawing and freezing should be avoided. Working dilutions should be stored at +4°C, not refrozen, and preferably used the same day. If a slight precipitation occurs upon storage, this should be removed by centrifugation. It will not affect the performance or the concentration of the product

## Note

For research use only

## Isotype

IgG1

## Clonality

Monoclonal

## Source

IIB5 is a Mouse monoclonal IgG1 antibody derived by fusion of SP2/0-Ag14 Mouse myeloma cells with spleen cells from a BALB/c Mouse intraperitoneally immunized with BrdU conjugated to Bovine Serum albumin.

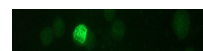
## Hazard

## Information

This product is intended FOR RESEARCH USE ONLY, and FOR TESTS IN VITRO, not for use in diagnostic or therapeutic procedures involving humans or animals. This product contains sodium azide. To prevent formation of toxic vapors, do not mix with strong acidic solutions. To prevent formation of potentially explosive metallic azides in metal plumbing, always wash into drain with copious quantities of water. This datasheet is as accurate as reasonably achievable, but Nordic-MUBio accepts no liability for any inaccuracies or omissions in this information.

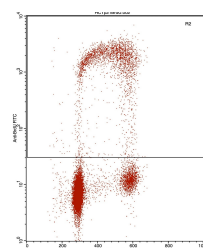
## Expiration Date

12 months from date of receipt.



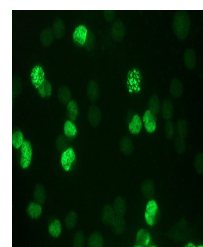
a: Flow cytometric analysis of the BrdU-

...



b: Flow cytometric analysis of the BrdU-

...



Indirect immunofluorescence staining of ...