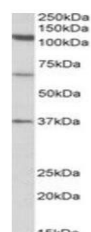


Product Datasheet

CP110 antibody (orb97641)

Description	Goat polyclonal to CP110
Species/Host	Goat
Reactivity	Human
Conjugation	Unconjugated
Tested Applications	ELISA, WB
Target	CP110
Preservatives	Supplied at 0.5 mg/ml in Tris saline, 0.02% sodium azide, pH 7.3 with 0.5% bovine serum albumin. Aliquot and store at -20°C. Minimize freezing and thawing.
Storage	Aliquot and store at -20°C. Minimize freezing and thawing.
Note	For research use only
Application notes	WB: Approx 110kDa band observed in Human Testis lysates (calculated MW of 113kDa according to NP_001185951.1). Recommended concentration: 0.3-1 µg/ml. Additional bands of unknown identity were also consistently observed at 65kDa and 37kDa. These bands were successfully blocked by incubation with the immunizing peptide. We would appreciate any feedback from people in the field - have any such results been reported with other antibodies/lysates. Have any further splice variants/specific breakdown fragments been reported.
Protein Sequence	CEKSLARIQEAS
Clonality	Polyclonal
MW	113; 111
Entrez	9738
Dilution Range	ELISA: 1:32000, WB: 0.3-1 µg/ml
Expiration Date	12 months from date of receipt.



Western blot analysis of Human Testis ly...