

## Product Datasheet

### Cytochrome P450 Reductase/POR Antibody (orb97078)

## Description

Cytochrome P450 Reductase/POR Antibody

### Species/Host

Rabbit

### Reactivity

Human, Mouse, Rat

### Conjugation

Unconjugated

### Tested Applications

FC, ICC, IHC, WB

### Immunogen

A synthetic peptide corresponding to a sequence at the C-terminus of human POR (659-677aa DYIKKLMTKGRYSLDVWS), different from the related rat and mouse sequences by one amino acid.

### Form/Appearance

Lyophilized

### Concentration

Adding 0.2 ml of distilled water will yield a concentration of 500 µg/ml.

### Storage

Store at -20°C for one year from date of receipt. After reconstitution, at 4°C for one month. It can also be aliquotted and stored frozen at -20°C for six months. Avoid repeated freeze-thaw cycles.

### Note

For research use only

### Application notes

Tested Species: In-house tested species with positive results. Predicted Species: Species predicted to be fit for the product based on sequence similarities. By Heat: Boiling the paraffin sections in 10mM citrate buffer, pH6.0, for 20mins is required for the staining of formalin/paraffin sections. Other applications have not been tested. Optimal dilutions should be determined by end users. . Add 0.2ml of distilled water will yield a concentration of 500ug/ml.

### Isotype

Rabbit IgG

### Clonality

Polyclonal

### MW

76690 MW

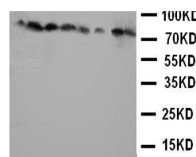
### Uniprot ID

**P16435**

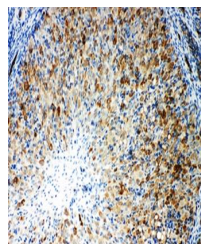
### Dilution Range

Immunohistochemistry (Paraffin-embedded Section), 0.5-1µg/ml, Human, Mouse, Rat, By HeatImmunocytochemistry, 0.5-1µg/ml, HumanWestern blot, 0.1-0.5µg/ml, Human, Mouse, RatFlow Cytometry, 1-3µg/1x10<sup>6</sup> cells, Human

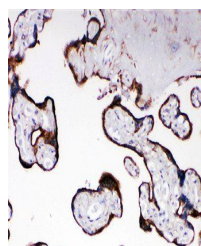
1 2 3 4 5 6 7 8 — 250KD



Western blot analysis of Lane 1: Rat Ova...



Immunohistochemical analysis of formalin...



Immunohistochemical analysis of formalin...