

Product Datasheet

Follistatin-related protein 3 FSTL3 Antibody (orb97041)

Description

Follistatin-related protein 3 FSTL3 Antibody

Species/Host

Rabbit

Reactivity

Human, Mouse, Rat

Conjugation

Unconjugated

Tested

WB

Applications

Immunogen

A synthetic peptide corresponding to a sequence in the middle region of human FSTL3 (145-159aa ECELRAARCRGHPDL), different from the related rat and mouse sequences by one amino acid.

Form/Appearance

Lyophilized

Concentration

Adding 0.2 ml of distilled water will yield a concentration of 500 µg/ml.

Storage

Store at -20°C for one year from date of receipt. After reconstitution, at 4°C for one month. It can also be aliquotted and stored frozen at -20°C for six months. Avoid repeated freeze-thaw cycles.

Note

For research use only

Application notes

WB: The detection limit for FSTL3 is approximately 5ng/lane under reducing conditions. Tested Species: In-house tested species with positive results. Predicted Species: Species predicted to be fit for the product based on sequence similarities. Other applications have not been tested. Optimal dilutions should be determined by end users. . Add 0.2ml of distilled water will yield a concentration of 500ug/ml.

Isotype

Rabbit IgG

Clonality

Polyclonal

MW

27663 MW

Uniprot ID

095633

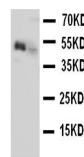
Dilution Range

Western blot, 0.1-0.5µg/ml, Human, Mouse, Rat

Expiration Date

12 months from date of receipt.

1 2 — 130KD



Western blot

analysis of
Lane 1:
Recombi...