

Product Datasheet

ErbB 4/ERBB4 Antibody (orb97008)

Description

ErbB 4/ERBB4 Antibody

Species/Host

Rabbit

Reactivity

Human, Mouse, Rat

Conjugation

Unconjugated

Tested

WB

Applications

Immunogen

A synthetic peptide corresponding to a sequence at the N-terminus of human ErbB 4 (35-51aa KLSSLSLDLEQQYRALRK), identical to the related rat and mouse sequences.

Form/Appearance

Lyophilized

Concentration

Adding 0.2 ml of distilled water will yield a concentration of 500 µg/ml.

Storage

Store at -20°C for one year from date of receipt. After reconstitution, at 4°C for one month. It can also be aliquotted and stored frozen at -20°C for six months. Avoid repeated freeze-thaw cycles.

Note

For research use only

Application notes

WB: The detection limit for ERBB4 is approximately 0.5ng/lane under reducing conditions. Tested Species: In-house tested species with positive results. Predicted Species: Species predicted to be fit for the product based on sequence similarities. Other applications have not been tested. Optimal dilutions should be determined by end users. . Add 0.2ml of distilled water will yield a concentration of 500ug/ml.

Isotype

Rabbit IgG

Clonality

Polyclonal

MW

146808 MW

Uniprot ID

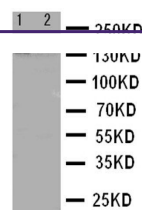
[Q15303](#)

Dilution Range

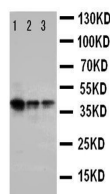
Western blot, 0.1-0.5µg/ml, Human, Mouse, Rat

Expiration Date

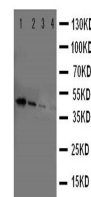
12 months from date of receipt.



Western blot analysis of Lane 1: A549 Ce...



Western blot analysis of Lane 1: Recombi...



Western blot analysis of Lane 1: Recombi...