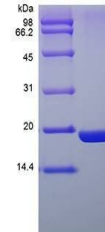


Product Datasheet

Human Ubiquitin-Conjugating Enzyme E2I protein (orb90004)

Description	Ubiquitin-Conjugating Enzyme E2I Human Recombinant produced in E.coli is a single, non-glycosylated ...
Conjugation	Unconjugated
Target	UBE2I
Preservatives	The protein (1 mg/ml) contains 50mM HEPES (pH7.5) 150mM NaCl, 1mM DTT, and 10% glycerol.
Storage	Store at 4°C if entire vial will be used within 2-4 weeks. Store frozen at -20°C for longer periods of time. For long term storage it is recommended to add carrier protein (0.1% HSA or BSA). Avoid multiple freeze-thaw cycles.
Note	For research use only
Protein Sequence	MSGIALSRLA QERKAWRKDH PFGFVAVPTK NPDGTMNL MN WECAIPGKKG TPWEGGLFKL RMLFKDDYPS SPPKCKFEPP LFHPNVYPSG TVCLSILEED KDWRPAITIK QILLGIQELL NEPNIQDPAQ AEAYTIYCQN RVEYEKRVRA QAKKFAPS.
Purity	Greater than 95.0% as determined by RP-HPLC and analysis by SDS-PAGE
Expiration Date	6 months from date of receipt.



SDS-PAGE analysis of Human Ubiquitin-Con...