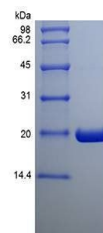


Product Datasheet

Human Ubiquitin Conjugating Enzyme E2C protein (orb90003)

Description	Ubiquitin Conjugating enzyme E2C Human Recombinant produced in E.coli is 21.1 kDa protein containing...
Conjugation	Unconjugated
Target	UBE2C
Preservatives	Lyophilized from 0.2 um filtered concentrated (1 mg/ml) solution in 1X PBS and 1mM DTT, pH 7.5.
Storage	Lyophilized UBE2°C although stable at room temperature for weeks, should be stored desiccated below -18°C. Upon reconstitution UBE2°C should be stored at 4°C between 2-7 days and for future use below -18°C. For long term storage it is recommended to add carrier protein (0. 1% HSA or BSA). Please prevent freeze/thaw cycles.
Note	For research use only
Protein Sequence	MHHHHHHAMG IRMASQNRDP AATSVAAARK GAEPSSGAAR GPGVKRLQQE LMTLMMSGDK GISAFESDN LFKWVGTHG AAGTVYEDLR YKLSLEFPSSG YPYNAPTVKF LTPCYHPNVD TQGNICLDIL KEKWSALYDV RTILLSIQSL LGEPNIDSPL NTHAAELWKN PTAFKKYLQE SKQVTSQEP.
Purity	Greater than 95.0% as determined by RP-HPLC and analysis by SDS-PAGE
Solubility (25°C)	It is recommended to reconstitute the lyophilized UBE2C in sterile water not less than 100ug/ml, which can then be further diluted to other aqueous solutions.
Expiration Date	6 months from date of receipt.



SDS-PAGE
analysis of
Human
Ubiquitin
Con...