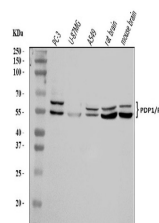


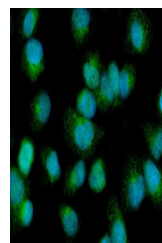
Product Datasheet

PDP1/PDP Antibody (orb865713)

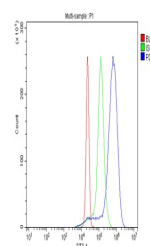
| | |
|----------------------------|--|
| Description | PDP1/PDP Antibody |
| Species/Host | Rabbit |
| Reactivity | Human, Mouse, Rat |
| Conjugation | Unconjugated |
| Tested Applications | ELISA, FC, ICC, IF, WB |
| Immunogen | E.coli-derived human PDP1/PDP recombinant protein (Position: S37-E537). |
| Form/Appearance | Lyophilized |
| Concentration | Adding 0.2 ml of distilled water will yield a concentration of 500 µg/ml. |
| Storage | At -20°C for one year from date of receipt. After reconstitution, at 4°C for one month. It can also be aliquotted and stored frozen at -20°C for six months. Avoid repeated freezing and thawing. |
| Note | For research use only |
| Application notes | Tested Species: In-house tested species with positive results. Other applications have not been tested. Optimal dilutions should be determined by end users. Adding 0.2 ml of distilled water will yield a concentration of 500 µg/ml. |
| Isotype | Rabbit IgG |
| Clonality | Polyclonal |
| MW | 53-61 kDa |
| Uniprot ID | Q9P0J1 |
| Dilution Range | Western blot, 0.25-0.5 µg/ml, Human, Mouse, Rat Immunocytochemistry/Immunofluorescence, 5 µg/ml, Human Flow Cytometry, 1-3 µg/1x10 ⁶ cells, Human Direct ELISA, 0.1-0.5 µg/ml, Human |
| Expiration Date | 12 months from date of receipt. |



Western blot analysis of PDP1/PDP using ...



IF analysis of PDP1/PDP using anti-PDP1/...



Flow Cytometry analysis of U937 cells us...