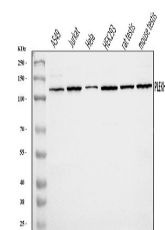


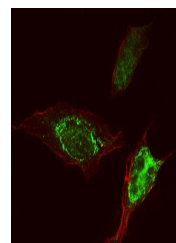
## Product Datasheet

### PEPP2/PLEKHA5 Antibody (orb865447)

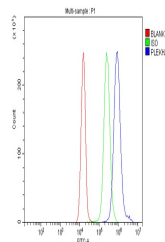
|                            |                                                                                                                                                                                                                                        |
|----------------------------|----------------------------------------------------------------------------------------------------------------------------------------------------------------------------------------------------------------------------------------|
| <b>Description</b>         | PEPP2/PLEKHA5 Antibody                                                                                                                                                                                                                 |
| <b>Species/Host</b>        | Rabbit                                                                                                                                                                                                                                 |
| <b>Reactivity</b>          | Human, Mouse, Rat                                                                                                                                                                                                                      |
| <b>Conjugation</b>         | Unconjugated                                                                                                                                                                                                                           |
| <b>Tested Applications</b> | ELISA, FC, ICC, IF, WB                                                                                                                                                                                                                 |
| <b>Immunogen</b>           | E.coli-derived human PEPP2/PLEKHA5 recombinant protein (Position: R25-Q905).                                                                                                                                                           |
| <b>Form/Appearance</b>     | Lyophilized                                                                                                                                                                                                                            |
| <b>Concentration</b>       | Adding 0.2 ml of distilled water will yield a concentration of 500 µg/ml.                                                                                                                                                              |
| <b>Storage</b>             | At -20°C for one year from date of receipt. After reconstitution, at 4°C for one month. It can also be aliquotted and stored frozen at -20°C for six months. Avoid repeated freezing and thawing.                                      |
| <b>Note</b>                | For research use only                                                                                                                                                                                                                  |
| <b>Application notes</b>   | Tested Species: In-house tested species with positive results. Other applications have not been tested. Optimal dilutions should be determined by end users. Adding 0.2 ml of distilled water will yield a concentration of 500 µg/ml. |
| <b>Isotype</b>             | Rabbit IgG                                                                                                                                                                                                                             |
| <b>Clonality</b>           | Polyclonal                                                                                                                                                                                                                             |
| <b>MW</b>                  | 130 kDa                                                                                                                                                                                                                                |
| <b>Uniprot ID</b>          | <b>Q9HAU0</b>                                                                                                                                                                                                                          |
| <b>Dilution Range</b>      | Western blot, 0.1-0.25 µg/ml, Human, Mouse, Rat<br>Immunocytochemistry/Immunofluorescence, 5 µg/ml, Human<br>Flow Cytometry, 1-3 µg/1x10 <sup>6</sup> cells, Human Direct ELISA, 0.1-0.5 µg/ml, Human                                  |
| <b>Expiration Date</b>     | 12 months from date of receipt.                                                                                                                                                                                                        |



Western blot analysis of PEPP2/PLEKHA5 u...



IF analysis of PEPP2/PLEKHA5 using anti-...



Flow Cytometry analysis of JK cells usin...