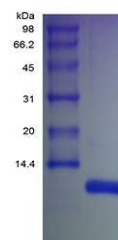


Product Datasheet

Human SDF 1 beta protein (orb80161)

Description	Human SDF1 beta protein
Conjugation	Unconjugated
Tested Applications	FA, HPLC, SDS-PAGE
Target	Human SDF1 beta
Preservatives	The CXCL12 protein was lyophilized from concentrated (1mg/ml) sterile solution containing no additives.
Storage	Store at 4°C for up to two weeks. For long term storage, aliquot and store at -20°C, avoid freeze/thaw cycles.
Note	For research use only
Application notes	Experiment Notes: Protein quantitation was carried out by two independent methods: 1. UV spectroscopy at 280 nm using the absorbency value of 1.06 as the extinction coefficient for 0.1% (1mg/ml) solution. This value is calculated by the PC GENE computer analysis program of protein sequences (IntelliGenetics). 2. Analysis by RP-HPLC, using standard solution of SDF-1 beta as Reference Standard.
Protein Sequence	The sequence of the first five N-terminal amino acids was determined and was found to be Lys-Pro-Val-Ser-Leu.
Purity	> 98.0% as determined by RP-HPLC and analysis by SDS-PAGE
Solubility (25°C)	It is recommended to reconstitute the lyophilized Stromal Cell-Derived Factor-1b in sterile H ₂ O not less than 100ug/ml, which can then be further diluted to other aqueous solutions.
Expiration Date	6 months from date of receipt.



SDS-PAGE analysis of Human SDF 1 beta pr...