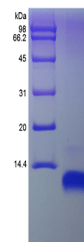


Product Datasheet

Human CCL22 protein (orb80145)

Description	CCL22 Human Recombinant produced in E.coli is non-glycosylated, Polypeptide chain containing 69 amin...
Reactivity	Human
Endotoxins	Less than 1 EU/μg of rHuMDC/CCL22 as determined by LAL method.
Conjugation	Unconjugated
Tested Applications	FA, HPLC, SDS-PAGE
Target	CCL22/MDC
Preservatives	CCL22 filtered (0.4 um) and lyophilized from concentrated solution containing 20 mM phosphate buffer 500mM NaCl pH-7.4.
Storage	Store at 4°C for up to two weeks. For long term storage, aliquot and store at -20°C, avoid freeze/thaw cycles.
Note	For research use only
Protein Sequence	GPYGANMEDS VCCRDYVRYR LPLRVVKHFY WTSDSCPRPG VVLLTFRDKE ICADPRVPWV KMILNKLSQ.
Purity	> 97.0% as determined by RP-HPLC and analysis by SDS-PAGE
Source	E.coli
MW	8.1 kDa
Uniprot ID	000626
Solubility (25°C)	It is recommended to reconstitute the lyophilized CCL22 in sterile H ₂ O not less than 100ug/ml, which can then be further diluted to other aqueous solutions. Product is not sterile! Please filter the product by an appropriate sterile filter befo
Expiration Date	6 months from date of receipt.



SDS-PAGE analysis of human CCL22 protein