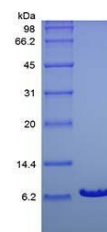


Product Datasheet

Human IGF1 protein (orb80045)

| | |
|----------------------------|--|
| Description | Insulin-Like Growth Factor-I Human Recombinant produced in E.coli is a single, non-glycosylated, pol... |
| Conjugation | Unconjugated |
| Tested Applications | FA, HPLC, SDS-PAGE |
| Target | IGF1 |
| Preservatives | The protein was lyophilized with no additives. |
| Storage | Store at 4°C for up to two weeks. For long term storage, aliquot and store at -20°C, avoid freeze/thaw cycles. |
| Note | For research use only |
| Application notes | Experiment Notes: Protein quantitation was carried out by two independent methods 1. UV spectroscopy at 280 nm using the absorbency value of 0.502 as the extinction coefficient for 0.1% (1mg/ml) solution. This value is calculated by the PC GENE computer analysis program of protein sequences (IntelliGenetics). 2. Analysis by RP-HPLC, using calibrated solution of IGF1 as Reference Standard. |
| Protein Sequence | GPETLCGAEL VDALQFVCGD RGFYFNKPTG YGSSRRAPQ TGIVDECCFR SCDLRRLEMY CAPLKPAKSA. |
| Purity | > 95.0% as determined by(a) Analysis by RP-HPLC(b) Analysis by SDS-PAGE. |
| Solubility (25°C) | It is recommended to reconstitute the lyophilized IGF-1 in sterile H ₂ O not less than 100ug/ml, which can then be further diluted to other aqueous solutions. |
| Expiration Date | 6 months from date of receipt. |



SDS-PAGE analysis of Human IGF1 protein