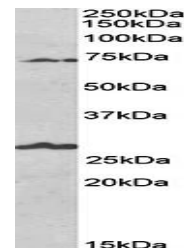


## Product Datasheet

### SLC6A12 antibody (orb79345)

<b>Description</b>	Goat polyclonal antibody to SLC6A12
<b>Species/Host</b>	Goat
<b>Reactivity</b>	Human
<b>Conjugation</b>	Unconjugated
<b>Tested Applications</b>	ELISA, IHC, WB
<b>Target</b>	SLC6A12 / BGT1
<b>Preservatives</b>	Supplied at 0.5 mg/ml in Tris saline, 0.02% sodium azide, pH 7.3 with 0.5% bovine serum albumin. Aliquot and store at -20°C. Minimize freezing and thawing.
<b>Storage</b>	Aliquot and store at -20°C. Minimize freezing and thawing.
<b>Note</b>	For research use only
<b>Application notes</b>	WB: Approx 70kDa band observed in Human Brain lysates from several regions (calculated MW of 69.4kDa according to NP_003035.3). Recommended concentration: 1-3 µg/ml. An additional band of unknown identity was also consistently observed at 27kDa. This band was successfully blocked by incubation with the immunizing peptide. We would appreciate any feedback from people in the field - have any such results been reported with other antibodies/lysates. Have any further splice variants/modified forms been reported. Experiment Notes: Reported variants represent identical protein: NP_001193860.1, NP_003035.3, NP_001116319.1, NP_001116320.1.
<b>Protein Sequence</b>	CLDGSAGRNFGPSPT
<b>Clonality</b>	Polyclonal
<b>MW</b>	69.4
<b>Entrez</b>	<b>6539</b>
<b>Dilution Range</b>	ELISA: 1:128000, WB: 1-3 µg/ml, IHC-P: 10 µg/ml
<b>Expiration Date</b>	12 months from date of receipt.



Western blot analysis of human Olfactory...