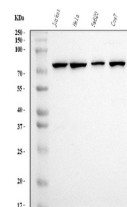


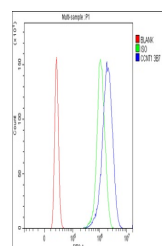
## Product Datasheet

### Cyclin T1 Antibody (monoclonal, 3B7) (orb763202)

<b>Description</b>	Cyclin T1 Antibody (monoclonal, 3B7)
<b>Species/Host</b>	Mouse
<b>Reactivity</b>	Human, Monkey
<b>Conjugation</b>	Unconjugated
<b>Tested Applications</b>	FC, WB
<b>Immunogen</b>	A synthetic peptide corresponding to a sequence in the middle region of human Cyclin T1 (375-410aa QKQNSKSVPSAKVSLKEYRAKHAEELAAQKRQLENM), different from the related mouse sequence by one amino acid.
<b>Form/Appearance</b>	Lyophilized
<b>Concentration</b>	Adding 0.2 ml of distilled water will yield a concentration of 500 µg/ml.
<b>Storage</b>	At -20°C for one year from date of receipt. After reconstitution, at 4°C for one month. It can also be aliquotted and stored frozen at -20°C for six months. Avoid repeated freezing and thawing.
<b>Note</b>	For research use only
<b>Application notes</b>	Tested Species: In-house tested species with positive results. Other applications have not been tested. Optimal dilutions should be determined by end users. Adding 0.2 ml of distilled water will yield a concentration of 500 µg/ml.
<b>Isotype</b>	Mouse IgG2b
<b>Clonality</b>	Monoclonal
<b>MW</b>	81 kDa
<b>Uniprot ID</b>	<b>O60563</b>
<b>Dilution Range</b>	Western blot, 0.25-0.5 µg/ml, Human, Monkey Flow Cytometry, 1-3 µg/1x10 <sup>6</sup> cells, Human
<b>Expiration Date</b>	12 months from date of receipt.



Western blot analysis of Cyclin T1 using...



Flow Cytometry analysis of U2OS cells us...