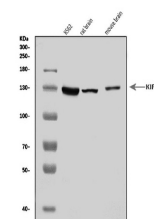


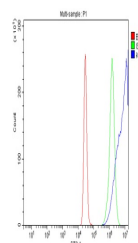
Product Datasheet

KIF5A Antibody (orb763128)

| | |
|----------------------------|--|
| Description | KIF5A Antibody |
| Species/Host | Rabbit |
| Reactivity | Human, Mouse, Rat |
| Conjugation | Unconjugated |
| Tested Applications | ELISA, FC, WB |
| Immunogen | E.coli-derived human KIF5A recombinant protein (Position: E374-S1032). |
| Form/Appearance | Lyophilized |
| Concentration | Adding 0.2 ml of distilled water will yield a concentration of 500 µg/ml. |
| Storage | At -20°C for one year from date of receipt. After reconstitution, at 4°C for one month. It can also be aliquotted and stored frozen at -20°C for six months. Avoid repeated freezing and thawing. |
| Note | For research use only |
| Application notes | Tested Species: In-house tested species with positive results. Other applications have not been tested. Optimal dilutions should be determined by end users. Adding 0.2 ml of distilled water will yield a concentration of 500 µg/ml. |
| Isotype | Rabbit IgG |
| Clonality | Polyclonal |
| MW | 117 kDa |
| Uniprot ID | Q12840 |
| Dilution Range | Western blot, 0.1-0.25 µg/ml, Human, Mouse, Rat Flow Cytometry, 1-3 µg/1x10 ⁶ cells, Human Direct ELISA, 0.1-0.5 µg/ml, Human |
| Expiration Date | 12 months from date of receipt. |



Western blot analysis of KIF5A using ant...



Flow Cytometry analysis of K562 cells us...