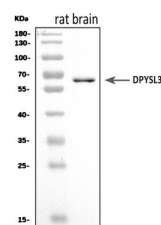


Product Datasheet

CRMP4/Dpysl3 Antibody (orb763117)

Description	CRMP4/Dpysl3 Antibody
Species/Host	Rabbit
Reactivity	Rat
Conjugation	Unconjugated
Tested Applications	WB
Immunogen	A synthetic peptide corresponding to a sequence of rat CRMP4/Dpysl3 (DAVKIVSAKNHQSVA).
Form/Appearance	Lyophilized
Concentration	Adding 0.2 ml of distilled water will yield a concentration of 500 µg/ml.
Storage	At -20°C for one year from date of receipt. After reconstitution, at 4°C for one month. It can also be aliquotted and stored frozen at -20°C for six months. Avoid repeated freezing and thawing.
Note	For research use only
Application notes	Tested Species: In-house tested species with positive results. Other applications have not been tested. Optimal dilutions should be determined by end users. Adding 0.2 ml of distilled water will yield a concentration of 500 µg/ml.
Isotype	Rabbit IgG
Clonality	Polyclonal
MW	62 kDa
Uniprot ID	Q62952
Dilution Range	Western blot, 0.25-0.5 µg/ml, Rat
Expiration Date	12 months from date of receipt.



Western blot analysis of CRMP4/Dpysl3 us...