

Product Datasheet

DCI/ECI1 Antibody (orb76276)

Description

DCI/ECI1 Antibody

Species/Host

Rabbit

Reactivity

Human, Mouse, Rat

Conjugation

Unconjugated

Tested Applications

ICC, IF, IHC, WB

Immunogen

A synthetic peptide corresponding to a sequence at the C-terminus of human DCI (272-290aa ADVQNFSVFSKDSIQKSL), different from the related mouse sequence by two amino acids and from the related rat sequence by three amino acids.

Form/Appearance

Lyophilized

Concentration

Adding 0.2 ml of distilled water will yield a concentration of 500 µg/ml.

Storage

Store at -20°C for one year from date of receipt. After reconstitution, at 4°C for one month. It can also be aliquotted and stored frozen at -20°C for six months. Avoid repeated freeze-thaw cycles.

Note

For research use only

Application notes

Tested Species: In-house tested species with positive results. Predicted Species: Species predicted to be fit for the product based on sequence similarities. By Heat: Boiling the paraffin sections in 10mM citrate buffer, pH6.0, for 20mins is required for the staining of formalin/paraffin sections. Other applications have not been tested. Optimal dilutions should be determined by end users. . Add 0.2ml of distilled water will yield a concentration of 500ug/ml.

Isotype

Rabbit IgG

Clonality

Polyclonal

MW

32816 MW

Uniprot ID

P42126

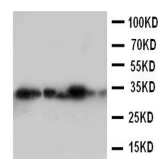
Dilution Range

Western blot, 0.1-0.5µg/ml, Human, Rat, Mouse
Immunohistochemistry (Paraffin-embedded Section), 0.5-1µg/ml, Human, By Heat Immunocytochemistry , 0.5-1µg/ml, Human, - Immunofluorescence, 2µg/ml, Human

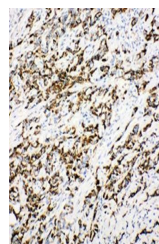
Expiration Date

12 months from date of receipt.

1 2 3 4 5 6 7



Western blot analysis of
Lane 1: Rat
Liv...



Immun

