

## Product Datasheet

### TRPC6 Antibody (orb76267)

## Description

TRPC6 Antibody

### Species/Host

Rabbit

### Reactivity

Human, Mouse, Rat

### Conjugation

Unconjugated

### Tested Applications

IHC, WB

### Immunogen

A synthetic peptide corresponding to a sequence in the middle region of human TRPC6 (249-265aa HDYFCKCNDNCKQKQKHD), different from the related rat and mouse sequences by three amino acids.

### Form/Appearance

Lyophilized

### Concentration

Adding 0.2 ml of distilled water will yield a concentration of 500 µg/ml.

### Storage

Store at -20°C for one year from date of receipt. After reconstitution, at 4°C for one month. It can also be aliquotted and stored frozen at -20°C for six months. Avoid repeated freeze-thaw cycles.

### Note

For research use only

### Application notes

Tested Species: In-house tested species with positive results. Predicted Species: Species predicted to be fit for the product based on sequence similarities. By Heat: Boiling the paraffin sections in 10mM citrate buffer, pH6.0, for 20mins is required for the staining of formalin/paraffin sections. Other applications have not been tested. Optimal dilutions should be determined by end users. . Add 0.2ml of distilled water will yield a concentration of 500ug/ml.

### Isotype

Rabbit IgG

### Clonality

Polyclonal

### MW

106326 MW

### Uniprot ID

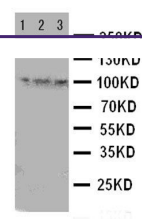
[Q9Y210](#)

### Dilution Range

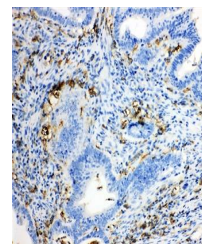
Immunohistochemistry (Paraffin-embedded Section), 0.5-1µg/ml, Human, Rat, Mouse, By HeatWestern blot, 0.1-0.5µg/ml, Human, Mouse, Rat

### Expiration Date

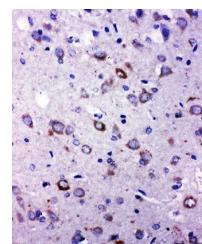
12 months from date of receipt.



Western blot analysis of Lane 1: Rat Lung...



Immunohistochemical analysis of formalin...



Immunohis