

## Product Datasheet

### Hsp105/HSPH1 Antibody (orb76122)

## Description

Hsp105/HSPH1 Antibody

## Species/Host

Rabbit

## Reactivity

Human, Mouse, Rat

## Conjugation

Unconjugated

## Tested Applications

FC, ICC, IF, IHC, IHC-Fr, WB

## Immunogen

A synthetic peptide corresponding to a sequence at the C-terminus of human Hsp105 (713-733aa EVMEWMNNVMNAQAKKSLDQD), different from the related mouse sequence by one amino acid, and different from the related rat sequence by two amino acids.

## Form/Appearance

Lyophilized

## Concentration

Adding 0.2 ml of distilled water will yield a concentration of 500 µg/ml.

## Storage

Store at -20°C for one year from date of receipt. After reconstitution, at 4°C for one month. It can also be aliquotted and stored frozen at -20°C for six months. Avoid repeated freeze-thaw cycles.

## Note

For research use only

## Application notes

Tested Species: In-house tested species with positive results. Predicted Species: Species predicted to be fit for the product based on sequence similarities. By Heat: Boiling the paraffin sections in 10mM citrate buffer, pH6.0, for 20mins is required for the staining of formalin/paraffin sections. Other applications have not been tested. Optimal dilutions should be determined by end users. . Add 0.2ml of distilled water will yield a concentration of 500ug/ml.

## Isotype

Rabbit IgG

## Clonality

Polyclonal

## MW

96865 MW

## Uniprot ID

[Q92598](#)

## Sensitivity

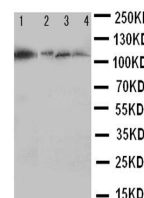
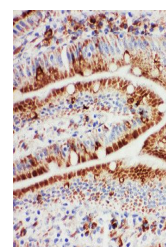
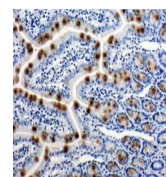
10pg/ml

## Dilution Range

Western blot, 0.1-0.5µg/ml, Human, Rat, Mouse  
Immunohistochemistry (Paraffin-embedded Section), 0.5-1µg/ml, Human, Rat, Mouse, By Heat Immunohistochemistry (Frozen Section), 0.5-1µg/ml, Rat, Human, Mouse  
Immunocytochemistry/Immunofluorescence, 5µg/ml, Human  
Flow Cytometry, 1-3µg/1x10<sup>6</sup> cells, Human

## Expiration Date

12 months from date of receipt.



Western blot analysis of  
Lane 1: Rat  
Ova...