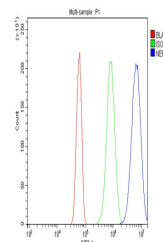


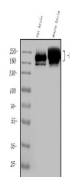
Product Datasheet

Nefh Antibody (orb738389)

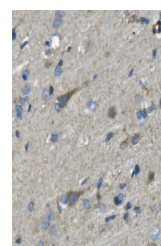
Description	Nefh Antibody
Species/Host	Rabbit
Reactivity	Mouse, Rat
Conjugation	Unconjugated
Tested Applications	ELISA, FC, IHC, WB
Immunogen	E.coli-derived mouse Nefh recombinant protein (Position: Y109-E466).
Form/Appearance	Lyophilized
Concentration	Adding 0.2 ml of distilled water will yield a concentration of 500 µg/ml.
Storage	Store at -20°C for one year from date of receipt. After reconstitution, at 4°C for one month. It can also be aliquotted and stored frozen at -20°C for six months. Avoid repeated freeze-thaw cycles.
Note	For research use only
Application notes	Tested Species: In-house tested species with positive results. Other applications have not been tested. Optimal dilutions should be determined by end users. Add 0.2ml of distilled water will yield a concentration of 500ug/ml.
Isotype	Rabbit IgG
Clonality	Polyclonal
MW	117-220 kDa
Uniprot ID	P19246
Dilution Range	Western blot, 0.1-0.25µg/ml, Mouse, Rat Immunohistochemistry (Paraffin-embedded Section), 2-5µg/ml, Mouse, Rat Flow Cytometry, 1-3µg/1x10 ⁶ cells, Mouse Direct ELISA, 0.1-0.5µg/ml, Mouse
Expiration Date	12 months from date of receipt.



Flow Cytometry analysis of Neuro-2a cell...



Western blot analysis of Nefh using anti...



IHC analysis of Nefh using anti-Nefh ant...