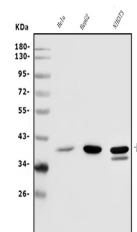


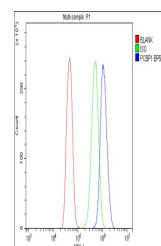
Product Datasheet

PCBP1 Antibody (orb692204)

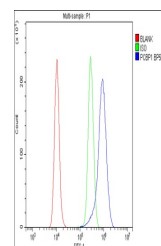
Description	PCBP1 Antibody
Species/Host	Rabbit
Reactivity	Human, Mouse, Rat
Conjugation	Unconjugated
Tested Applications	ELISA, FC, IHC, WB
Immunogen	E.coli-derived human PCBP1 recombinant protein (Position: P152-K268).
Form/Appearance	Lyophilized
Concentration	Adding 0.2 ml of distilled water will yield a concentration of 500 µg/ml.
Storage	Store at -20°C for one year from date of receipt. After reconstitution, at 4°C for one month. It can also be aliquotted and stored frozen at -20°C for six months. Avoid repeated freeze-thaw cycles.
Note	For research use only
Application notes	Tested Species: In-house tested species with positive results. Other applications have not been tested. Optimal dilutions should be determined by end users. Add 0.2ml of distilled water will yield a concentration of 500µg/ml.
Isotype	Rabbit IgG
Clonality	Polyclonal
MW	40 kDa
Uniprot ID	Q15365
Dilution Range	Western blot, 0.25-0.5µg/ml, Human, Mouse Immunohistochemistry (Paraffin-embedded Section), 2-5µg/ml, Human Flow Cytometry, 1-3µg/1x10 ⁶ cells, Human, Mouse, Rat Direct ELISA, 0.1-0.5µg/ml, Human
Expiration Date	12 months from date of receipt.



Western blot analysis of PCBP1 using ant...



Flow Cytometry analysis of CACO-2 cells ...



Flow Cytometry analysis of RAW264.7 cell...