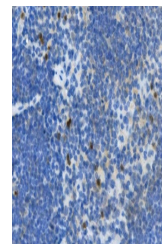


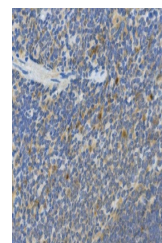
Product Datasheet

IL10 Antibody (orb692186)

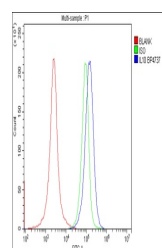
Description	IL10 Antibody
Species/Host	Rabbit
Reactivity	Mouse, Rat
Conjugation	Unconjugated
Tested Applications	ELISA, FC, IHC
Immunogen	E.coli-derived rat IL10 recombinant protein (Position: K52-A170).
Form/Appearance	Lyophilized
Concentration	Adding 0.2 ml of distilled water will yield a concentration of 500 µg/ml.
Storage	Store at -20°C for one year from date of receipt. After reconstitution, at 4°C for one month. It can also be aliquotted and stored frozen at -20°C for six months. Avoid repeated freeze-thaw cycles.
Note	For research use only
Application notes	Tested Species: In-house tested species with positive results. Other applications have not been tested. Optimal dilutions should be determined by end users. Add 0.2ml of distilled water will yield a concentration of 500µg/ml.
Isotype	Rabbit IgG
Clonality	Polyclonal
Uniprot ID	P29456
Dilution Range	Immunohistochemistry (Paraffin-embedded Section), 2-5µg/ml, Mouse, Rat Flow Cytometry, 1-3µg/1x10 ⁶ cells, Rat Direct ELISA, 0.1-0.5µg/ml, Rat
Expiration Date	12 months from date of receipt.



IHC analysis of IL10 using anti-IL10 ant...



IHC analysis of IL10 using anti-IL10 ant...



Flow Cytometry analysis of rat spleen ti...