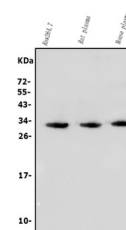


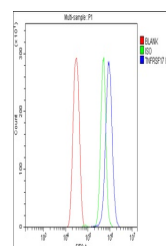
Product Datasheet

BCMA/Tnfrsf17 Antibody (orb669206)

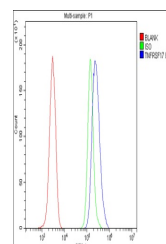
| | |
|----------------------------|---|
| Description | BCMA/Tnfrsf17 Antibody |
| Species/Host | Rabbit |
| Reactivity | Mouse, Rat |
| Conjugation | Unconjugated |
| Tested Applications | FC, IHC, WB |
| Immunogen | A synthetic peptide corresponding to a sequence of mouse BCMA/Tnfrsf17 (FHSEYFDSLLHACKPCHLRC). |
| Form/Appearance | Lyophilized |
| Concentration | Adding 0.2 ml of distilled water will yield a concentration of 500 µg/ml. |
| Storage | Store at -20°C for one year from date of receipt. After reconstitution, at 4°C for one month. It can also be aliquotted and stored frozen at -20°C for six months. Avoid repeated freeze-thaw cycles. |
| Note | For research use only |
| Application notes | Tested Species: In-house tested species with positive results. Other applications have not been tested. Optimal dilutions should be determined by end users. Add 0.2ml of distilled water will yield a concentration of 500ug/ml. |
| Isotype | Rabbit IgG |
| Clonality | Polyclonal |
| MW | 30 kDa |
| Uniprot ID | O88472 |
| Dilution Range | Western blot, 0.25-0.5µg/ml, Mouse, Rat Immunohistochemistry (Paraffin-embedded Section), 2-5µg/ml, Mouse, Rat Flow Cytometry, 1-3µg/1x10 ⁶ cells, Mouse |
| Expiration Date | 12 months from date of receipt. |



Western blot analysis of BCMA/Tnfrsf17 u...



Flow Cytometry analysis of HEPA1-6 cells...



Flow Cytometry analysis of Raw264.7 cell...