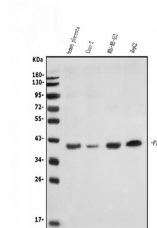


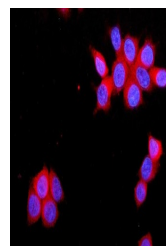
Product Datasheet

JAM-A/F11R Antibody (orb669175)

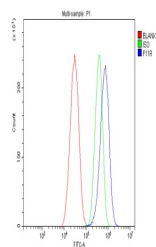
Description	JAM-A/F11R Antibody
Species/Host	Rabbit
Reactivity	Human
Conjugation	Unconjugated
Tested Applications	FC, ICC, IF, WB
Immunogen	A synthetic peptide corresponding to a sequence of human JAM-A/F11R (RVEWKFDQGDTRLVCYNNK).
Form/Appearance	Lyophilized
Concentration	Adding 0.2 ml of distilled water will yield a concentration of 500 µg/ml.
Storage	Store at -20°C for one year from date of receipt. After reconstitution, at 4°C for one month. It can also be aliquotted and stored frozen at -20°C for six months. Avoid repeated freeze-thaw cycles.
Note	For research use only
Application notes	Tested Species: In-house tested species with positive results. Other applications have not been tested. Optimal dilutions should be determined by end users. Add 0.2ml of distilled water will yield a concentration of 500ug/ml.
Isotype	Rabbit IgG
Clonality	Polyclonal
MW	41 kDa
Uniprot ID	Q9Y624
Dilution Range	Western blot, 0.25-0.5µg/ml, Human Immunocytochemistry/Immunofluorescence, 5µg/ml, Human Flow Cytometry, 1-3µg/1x10 ⁶ cells, Human
Expiration Date	12 months from date of receipt.



Western blot analysis of JAM-A/F11R using anti-JAM-A/F11R antibody.



IF analysis of JAM-A/F11R using anti-JAM-A/F11R antibody.



Flow Cytometry analysis of HEPG2 cells using anti-JAM-A/F11R antibody.