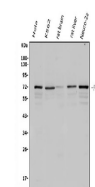


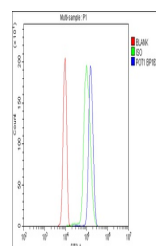
Product Datasheet

POT1 Antibody (orb669113)

Description	POT1 Antibody
Species/Host	Rabbit
Reactivity	Human, Mouse, Rat
Conjugation	Unconjugated
Tested Applications	ELISA, FC, WB
Immunogen	E.coli-derived rat POT1 recombinant protein (Position: N15-V638).
Form/Appearance	Lyophilized
Concentration	Adding 0.2 ml of distilled water will yield a concentration of 500 µg/ml.
Storage	Store at -20°C for one year from date of receipt. After reconstitution, at 4°C for one month. It can also be aliquotted and stored frozen at -20°C for six months. Avoid repeated freeze-thaw cycles.
Note	For research use only
Application notes	Tested Species: In-house tested species with positive results. Other applications have not been tested. Optimal dilutions should be determined by end users. Add 0.2ml of distilled water will yield a concentration of 500ug/ml.
Isotype	Rabbit IgG
Clonality	Polyclonal
MW	71 kDa
Uniprot ID	A0A0G2JX31
Dilution Range	Western blot, 0.25-0.5µg/ml, Human, Mouse, Rat Flow Cytometry, 1-3µg/1x10 ⁶ cells, Human Direct ELISA, 0.1-0.5µg/ml, Rat
Expiration Date	12 months from date of receipt.



Western blot analysis of POT1 using anti-POT1 antibody.



Flow Cytometry analysis of U937 cells using anti-POT1 antibody.