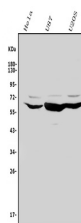


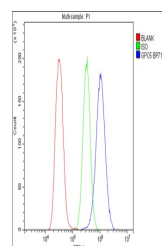
Product Datasheet

Glypican 5/GPC5 Antibody (orb654428)

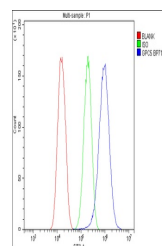
Description	Glypican 5/GPC5 Antibody
Species/Host	Rabbit
Reactivity	Human
Conjugation	Unconjugated
Tested Applications	ELISA, FC, ICC, IF, WB
Immunogen	E.coli-derived human Glypican 5/GPC5 recombinant protein (Position: Q28-D538).
Form/Appearance	Lyophilized
Concentration	Adding 0.2 ml of distilled water will yield a concentration of 500 µg/ml.
Storage	Store at -20°C for one year from date of receipt. After reconstitution, at 4°C for one month. It can also be aliquotted and stored frozen at -20°C for six months. Avoid repeated freeze-thaw cycles.
Note	For research use only
Application notes	Tested Species: In-house tested species with positive results. Other applications have not been tested. Optimal dilutions should be determined by end users. Add 0.2ml of distilled water will yield a concentration of 500ug/ml.
Isotype	Rabbit IgG
Clonality	Polyclonal
MW	64 kDa
Uniprot ID	P78333
Dilution Range	Western blot, 0.25-0.5µg/ml, Human Immunocytochemistry/Immunofluorescence, 4µg/ml, Human Flow Cytometry, 1-3µg/1x10 ⁶ cells, Human Direct ELISA, 0.1-0.5µg/ml, Human
Expiration Date	12 months from date of receipt.



Western blot analysis of Glypican 5/GPC5...



Flow Cytometry analysis of U2OS cells us...



Flow Cytometry analysis of U87 cells usi...