

## Product Datasheet

### Collagen I/COL1A1 Antibody (orb654259)

**Description**

Collagen I/COL1A1 Antibody

**Species/Host**

Rabbit

**Reactivity**

Human, Mouse

**Conjugation**

Unconjugated

**Tested**

IHC, WB

**Applications**
**Immunogen**

A synthetic peptide corresponding to a sequence at the C-terminus of human Collagen I (1203-1218aa QPPQEKAHDGGYYRA), different from the related rat and mouse sequences by two amino acids.

**Form/Appearance**

Lyophilized

**Concentration**

Adding 0.2 ml of distilled water will yield a concentration of 500 µg/ml.

**Storage**

At -20°C for one year from date of receipt. After reconstitution, at 4°C for one month. It can also be aliquotted and stored frozen at -20°C for six months. Avoid repeated freezing and thawing.

**Note**

For research use only

**Application notes**

WB: The detection limit for COL1A1 is approximately 0.5ng/lane under reducing conditions. Tested Species: In-house tested species with positive results. Predicted Species: Species predicted to be fit for the product based on sequence similarities. By Heat: Boiling the paraffin sections in 10mM citrate buffer, pH6.0, for 20mins is required for the staining of formalin/paraffin sections. Other applications have not been tested. Optimal dilutions should be determined by end users. . Add 0.2ml of distilled water will yield a concentration of 500ug/ml.

**Isotype**

Rabbit IgG

**Clonality**

Polyclonal

**MW**

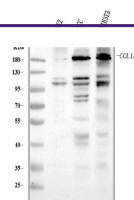
138941 MW

**Uniprot ID**
**P02452**
**Dilution Range**

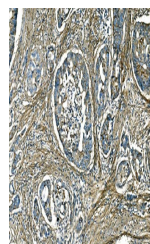
Western blot, 0.25-0.5µg/ml, Human, Mouse  
Immunohistochemistry (Paraffin-embedded Section), 2-5µg/ml, Human, By Heat

**Expiration Date**

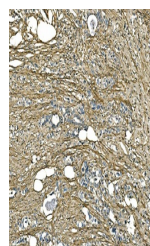
12 months from date of receipt.



Western blot analysis of COL1A1 using an...



IHC analysis of COL1A1 using anti-COL1A1...



IHC analysis of COL1A1 using anti-COL1A1...