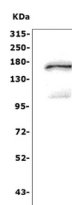


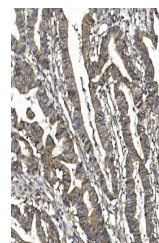
## Product Datasheet

### SORBS1 Antibody (orb623900)

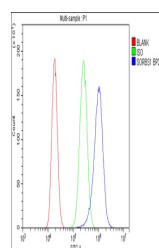
|                            |   |
|----------------------------|---|
| <b>Description</b>         | SORBS1 Antibody   |
| <b>Species/Host</b>        | Rabbit  |
| <b>Reactivity</b>          | Human   |
| <b>Conjugation</b>         | Unconjugated  |
| <b>Tested Applications</b> | ELISA, FC, IHC, WB  |
| <b>Immunogen</b>           | E.coli-derived human SORBS1 recombinant protein (Position: Q23-R323).   |
| <b>Form/Appearance</b>     | Lyophilized   |
| <b>Concentration</b>       | Adding 0.2 ml of distilled water will yield a concentration of 500 µg/ml.   |
| <b>Storage</b>             | Store at -20°C for one year from date of receipt. After reconstitution, at 4°C for one month. It can also be aliquotted and stored frozen at -20°C for six months. Avoid repeated freeze-thaw cycles.                             |
| <b>Note</b>                | For research use only   |
| <b>Application notes</b>   | Tested Species: In-house tested species with positive results. Other applications have not been tested. Optimal dilutions should be determined by end users. Add 0.2ml of distilled water will yield a concentration of 500ug/ml. |
| <b>Isotype</b>             | Rabbit IgG  |
| <b>Clonality</b>           | Polyclonal  |
| <b>MW</b>                  | 160 kDa   |
| <b>Uniprot ID</b>          | <b>Q9BX66</b>   |
| <b>Dilution Range</b>      | Western blot, 0.25-0.5µg/ml, Human Immunohistochemistry (Paraffin-embedded Section), 0.5-1µg/ml, Human, Mouse, Rat Flow Cytometry, 1-3µg/1x10 <sup>6</sup> cells, Human Direct ELISA, 0.1-0.5µg/ml, Human                         |
| <b>Expiration Date</b>     | 12 months from date of receipt.   |



Western blot analysis of SORBS1 using an...



IHC analysis of SORBS1 using anti-SORBS1...



Flow Cytometry analysis of PC-3 cells us...