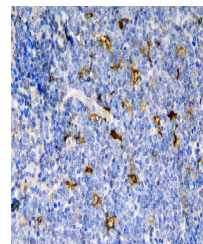


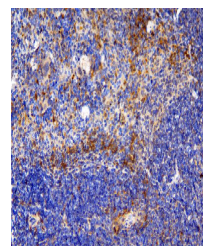
Product Datasheet

CCR6 Antibody (orb623849)

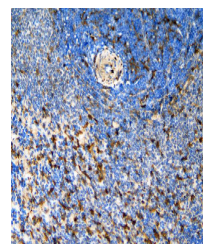
Description	CCR6 Antibody
Species/Host	Rabbit
Reactivity	Human, Mouse, Rat
Conjugation	Unconjugated
Tested Applications	IHC
Immunogen	A synthetic peptide corresponding to a sequence of human CCR6 (SLQEVRFSLFVPIAY).
Form/Appearance	Lyophilized
Concentration	Adding 0.2 ml of distilled water will yield a concentration of 500 µg/ml.
Storage	Store at -20°C for one year from date of receipt. After reconstitution, at 4°C for one month. It can also be aliquotted and stored frozen at -20°C for six months. Avoid repeated freeze-thaw cycles.
Note	For research use only
Application notes	Tested Species: In-house tested species with positive results. Other applications have not been tested. Optimal dilutions should be determined by end users. Add 0.2ml of distilled water will yield a concentration of 500ug/ml.
Isotype	Rabbit IgG
Clonality	Polyclonal
Uniprot ID	P51684
Dilution Range	Immunohistochemistry (Paraffin-embedded Section), 0.5-1µg/ml, Human, Mouse, Rat
Expiration Date	12 months from date of receipt.



Immunohistochemical staining of human to...



Immunohistochemical staining of mouse sp...



Immunohistochemical staining of rat sple...