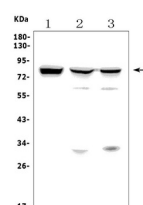


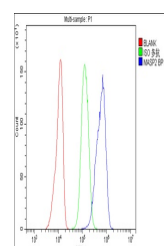
Product Datasheet

MASP2 Antibody (orb623808)

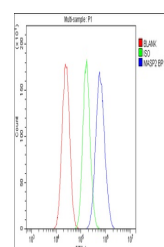
Description	MASP2 Antibody
Species/Host	Rabbit
Reactivity	Human
Conjugation	Unconjugated
Tested Applications	FC, WB
Immunogen	A synthetic peptide corresponding to a sequence of human MASP2 (EAGQYGVYTKVINYPWNIISDF).
Form/Appearance	Lyophilized
Concentration	Adding 0.2 ml of distilled water will yield a concentration of 500 µg/ml.
Storage	Store at -20°C for one year from date of receipt. After reconstitution, at 4°C for one month. It can also be aliquotted and stored frozen at -20°C for six months. Avoid repeated freeze-thaw cycles.
Note	For research use only
Application notes	Tested Species: In-house tested species with positive results. Other applications have not been tested. Optimal dilutions should be determined by end users. . Add 0.2ml of distilled water will yield a concentration of 500ug/ml.
Isotype	Rabbit IgG
Clonality	Polyclonal
MW	76 kDa
Uniprot ID	000187
Dilution Range	Western blot, 0.25-0.5µg/ml, Human Flow Cytometry, 1-3µg/1x10 ⁶ cells, Human
Expiration Date	12 months from date of receipt.



WB analysis using anti-MASP2 antibody.La...



Flow Cytometry analysis of A431 cells u...



Flow Cytometry analysis of HepG2 cells u...