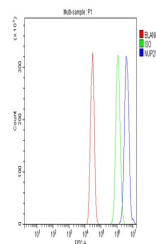


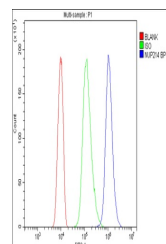
Product Datasheet

NUP214 Antibody (orb614131)

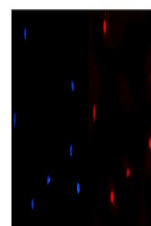
| | |
|----------------------------|---|
| Description | NUP214 Antibody |
| Species/Host | Rabbit |
| Reactivity | Human, Mouse |
| Conjugation | Unconjugated |
| Tested Applications | ELISA, FC, ICC, IF, WB |
| Immunogen | E.coli-derived human NUP214 recombinant protein (Position: K36-E374). |
| Form/Appearance | Lyophilized |
| Concentration | Adding 0.2 ml of distilled water will yield a concentration of 500 µg/ml. |
| Storage | Store at -20°C for one year from date of receipt. After reconstitution, at 4°C for one month. It can also be aliquotted and stored frozen at -20°C for six months. Avoid repeated freeze-thaw cycles. |
| Note | For research use only |
| Application notes | Tested Species: In-house tested species with positive results. Other applications have not been tested. Optimal dilutions should be determined by end users. . Add 0.2ml of distilled water will yield a concentration of 500ug/ml. |
| Isotype | Rabbit IgG |
| Clonality | Polyclonal |
| MW | 280 kDa |
| Uniprot ID | P35658 |
| Dilution Range | Western blot, 0.25-0.5µg/ml, Human, Mouse Immunocytochemistry/Immunofluorescence, 2µg/ml, Human, Mouse Flow Cytometry, 1-3µg/1x10 ⁶ cells, Human, Mouse Direct ELISA, 0.1-0.5µg/ml, Human |
| Expiration Date | 12 months from date of receipt. |



Flow Cytometry analysis of HEPA1-6 cells...



Flow Cytometry analysis of HL-60 cells u...



IF analysis of NUP214 using anti-NUP214 ...