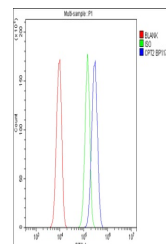


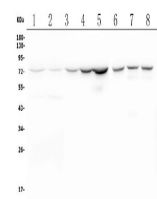
Product Datasheet

CPT2/CPT1 Antibody (orb614108)

Description	CPT2/CPT1 Antibody
Species/Host	Rabbit
Reactivity	Human, Mouse, Rat
Conjugation	Unconjugated
Tested Applications	ELISA, FC, WB
Immunogen	E.coli-derived human CPT2/CPT1 recombinant protein (Position: Q33-D646).
Form/Appearance	Lyophilized
Concentration	Adding 0.2 ml of distilled water will yield a concentration of 500 µg/ml.
Storage	Store at -20°C for one year from date of receipt. After reconstitution, at 4°C for one month. It can also be aliquotted and stored frozen at -20°C for six months. Avoid repeated freeze-thaw cycles.
Note	For research use only
Application notes	"Tested Species: In-house tested species with positive results. Other applications have not been tested. Optimal dilutions should be determined by end users." . Add 0.2ml of distilled water will yield a concentration of 500ug/ml.
Isotype	Rabbit IgG
Clonality	Polyclonal
MW	74 kDa
Uniprot ID	P23786
Dilution Range	"Western blot, 0.25-0.5µg/ml, Human, Mouse, Rat Flow Cytometry, 1-3µg/1x10 ⁶ cells, Human Direct ELISA, 0.1-0.5µg/ml, Human"
Expiration Date	12 months from date of receipt.



Flow Cytometry analysis of A549 cells us...



WB analysis using anti-CPT2 antibody.Lan...