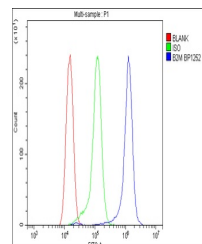


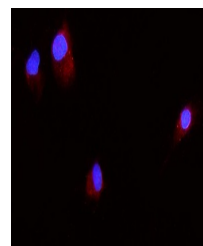
Product Datasheet

beta 2 Microglobulin/B2m Antibody (orb614096)

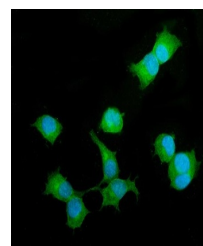
Description	beta 2 Microglobulin/B2m Antibody
Species/Host	Rabbit
Reactivity	Mouse, Rat
Conjugation	Unconjugated
Tested Applications	ELISA, FC, ICC, IF, WB
Immunogen	E.coli-derived rat beta 2 Microglobulin/B2m recombinant protein (Position: I21-M119).
Form/Appearance	Lyophilized
Concentration	Adding 0.2 ml of distilled water will yield a concentration of 500 µg/ml.
Storage	Store at -20°C for one year from date of receipt. After reconstitution, at 4°C for one month. It can also be aliquotted and stored frozen at -20°C for six months. Avoid repeated freeze-thaw cycles.
Note	For research use only
Application notes	Tested Species: In-house tested species with positive results. Other applications have not been tested. Optimal dilutions should be determined by end users. . Add 0.2ml of distilled water will yield a concentration of 500ug/ml.
Isotype	Rabbit IgG
Clonality	Polyclonal
MW	13 kDa
Uniprot ID	P01887
Dilution Range	Western blot, 0.1-0.25µg/ml, Mouse, Rat Immunocytochemistry/Immunofluorescence, 5µg/ml, Mouse, Rat Flow Cytometry, 1-3µg/1x10 ⁶ cells, Rat Direct ELISA, 0.1-0.5µg/ml, Rat
Expiration Date	12 months from date of receipt.



Flow Cytometry analysis of RH35 cells us...



IF analysis of Beta 2 Microglobulin/B2m ...



IF analysis of Beta 2 Microglobulin/B2m ...