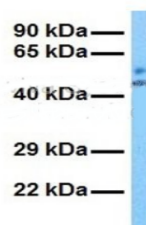


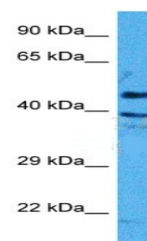
Product Datasheet

OCN antibody (orb578638)

Description	OCN is an integral membrane protein which is located at tight junctions. This protein may be involv...
Species/Host	Rabbit
Reactivity	Animal, Bovine, Canine, Guinea pig, Human, Mouse, Rat, Zebrafish
Conjugation	Unconjugated
Tested Applications	WB
Immunogen	The immunogen is a synthetic peptide directed towards the N terminal region of human OCN
Target	OCN
Preservatives	Liquid. Purified antibody supplied in 1x PBS buffer with 0.09% (w/v) sodium azide and 2% sucrose.
Form/Appearance	Liquid. Purified antibody supplied in 1x PBS buffer with 0.09% (w/v) sodium azide and 2% sucrose.
Concentration	0.5 mg/ml
Storage	For short term use, store at 2-8C up to 1 week. For long term storage, store at -2°C in small aliquots to prevent freeze-thaw cycles.
Note	For research use only
Protein Sequence	Synthetic peptide located within the following region: VRPMLSQPAYSFYPEDEILHFYKWTSPPGVIRILSMLIIVMCIAIFACVA
Clonality	Polyclonal
MW	59kDa
Uniprot ID	Q16625
NCBI	NP_002529
Expiration Date	12 months from date of receipt.



Western blot analysis of Human Fetal Liver...



Western blot analysis of Rat Brain using...