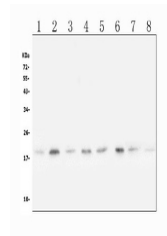


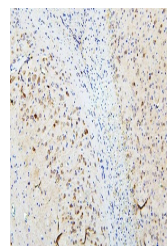
Product Datasheet

SKP1 Antibody (orb570410)

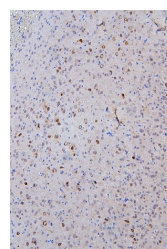
Description	SKP1 Antibody
Species/Host	Rabbit
Reactivity	Human, Mouse, Rat
Conjugation	Unconjugated
Tested Applications	ELISA, IHC, WB
Immunogen	E.coli-derived human SKP1 recombinant protein (Position: P2-K128).
Form/Appearance	Lyophilized
Concentration	Adding 0.2 ml of distilled water will yield a concentration of 500 µg/ml.
Storage	Store at -20°C for one year from date of receipt. After reconstitution, at 4°C for one month. It can also be aliquotted and stored frozen at -20°C for six months. Avoid repeated freeze-thaw cycles.
Note	For research use only
Application notes	Tested Species: In-house tested species with positive results. Other applications have not been tested. Optimal dilutions should be determined by end users. Add 0.2ml of distilled water will yield a concentration of 500ug/ml.
Isotype	Rabbit IgG
Clonality	Polyclonal
MW	19 kDa
Uniprot ID	P63208
Dilution Range	Western blot, 0.25-0.5µg/ml, Human, Mouse, Rat Immunohistochemistry (Paraffin-embedded Section), 0.5-1µg/ml, Human, Mouse, Rat, By Heat Direct ELISA, 0.1-0.5µg/ml, Human
Expiration Date	12 months from date of receipt.



WB analysis using anti-SKP1 antibody. Lan...



IHC analysis of SKP1 using anti-SKP1 ant...



IHC analysis of SKP1 using anti-SKP1 ant...