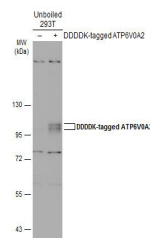


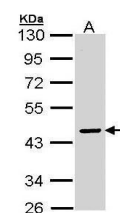
Product Datasheet

ATP6V0A2 antibody (orb556680)

Description	Rabbit polyclonal antibody to ATP6V0A2
Species/Host	Rabbit
Reactivity	Human
Conjugation	Unconjugated
Tested Applications	WB
Immunogen	Recombinant protein encompassing a sequence within the center region of human ATP6V0A2. The exact sequence is proprietary.
Target	ATP6V0A2
Preservatives	0.01% Thimerosal. 1XPBS (pH7), 20% Glycerol
Form/Appearance	Liquid: 0.1M Tris, 0.1M Glycine, 10% Glycerol (pH7). 0.01% Thimerosal was added as a preservative.
Concentration	1 mg/ml
Storage	Store as concentrated solution. Centrifuge briefly prior to opening vial. For short-term storage (1-2 weeks), store at 4°C. For long-term storage, aliquot and store at -20°C or below. Avoid multiple freeze-thaw cycles.
Note	For research use only
Isotype	IgG
Clonality	Polyclonal
Purity	Purified by antigen-affinity chromatography.
MW	98
Uniprot ID	Q9Y487
Dilution Range	WB: 1:1000-1:10000
Expiration Date	12 months from date of receipt.



Western blot analysis of 293T cells using...



Western blot analysis of Molt-4 cells using...