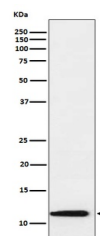


Product Datasheet

Thioredoxin 2 Monoclonal Antibody (orb548317)

Description	Thioredoxin 2 Monoclonal Antibody
Species/Host	Rabbit
Reactivity	Human, Mouse, Rat
Conjugation	Unconjugated
Tested Applications	FC, ICC, IF, IHC, WB
Immunogen	A synthesized peptide derived from human Thioredoxin 2 Thioredoxins (Trx) are small, multi-functional proteins with oxidoreductase activity and are ubiquitous in essentially all living cells. Trx contains a redox-active disulfide/dithiol group within the conserved Cys-Gly-Pro-Cys active site.
Form/Appearance	Liquid
Concentration	Actual concentration vary by lot. Use suggested dilution ratio to decide dilution procedure.
Storage	Store at -20°C for one year. For short term storage and frequent use, store at 4°C for up to one month. Avoid repeated freeze-thaw cycles.
Note	For research use only
Isotype	Rabbit IgG
Clonality	Monoclonal
Uniprot ID	Q99757
Dilution Range	WB 1:1000-1:5000IHC 1:50-1:200ICC/IF 1:50-1:200FC 1:100
Expiration Date	12 months from date of receipt.



Western blot analysis of TXN2 expression...