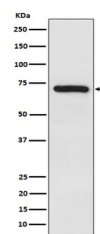


## Product Datasheet

### TRIM25 Monoclonal Antibody (orb548177)

|                            |  |
|----------------------------|--|
| <b>Description</b>         | TRIM25 Monoclonal Antibody   |
| <b>Species/Host</b>        | Rabbit   |
| <b>Reactivity</b>          | Human, Mouse, Rat  |
| <b>Conjugation</b>         | Unconjugated   |
| <b>Tested Applications</b> | FC, ICC, IF, IHC, IP, WB   |
| <b>Immunogen</b>           | A synthesized peptide derived from human TRIM25<br>Functions as an ubiquitin E3 ligase and as an ISG15 E3 ligase. Involved in innate immune defense against viruses by mediating ubiquitination of DDX58. Mediates 'Lys-63'-linked polyubiquitination of the DDX58 N-terminal CARD-like region which is crucial for triggering the cytosolic signal transduction that leads to the production of interferons in response to viral infection. |
| <b>Form/Appearance</b>     | Liquid   |
| <b>Concentration</b>       | Actual concentration vary by lot. Use suggested dilution ratio to decide dilution procedure.   |
| <b>Storage</b>             | Store at -20°C for one year. For short term storage and frequent use, store at 4°C for up to one month. Avoid repeated freeze-thaw cycles.   |
| <b>Note</b>                | For research use only  |
| <b>Isotype</b>             | Rabbit IgG   |
| <b>Clonality</b>           | Monoclonal   |
| <b>Uniprot ID</b>          | <b>Q14258</b>  |
| <b>Dilution Range</b>      | WB 1:1000-1:5000IHC 1:50-1:200ICC/IF 1:100-1:500IP 1:50FC 1:60   |
| <b>Expiration Date</b>     | 12 months from date of receipt.  |



Western blot analysis of TRIM25 expressi...