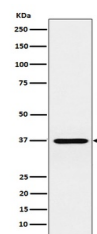


## Product Datasheet

### CRX Monoclonal Antibody (orb547975)

<b>Description</b>	CRX Monoclonal Antibody
<b>Species/Host</b>	Rabbit
<b>Reactivity</b>	Human
<b>Conjugation</b>	Unconjugated
<b>Tested Applications</b>	IHC, WB
<b>Immunogen</b>	A synthesized peptide derived from human CRX Binds and transactivates the sequence 5'-TAATC[CA]-3' which is found upstream of several photoreceptor-specific genes, including the opsin genes. Acts synergistically with other transcription factors, e.g. NRL and RX, to regulate photoreceptor cell-specific gene transcription. Essential for the maintenance of mammalian photoreceptors.
<b>Form/Appearance</b>	Liquid
<b>Concentration</b>	Actual concentration vary by lot. Use suggested dilution ratio to decide dilution procedure.
<b>Storage</b>	Store at -20°C for one year. For short term storage and frequent use, store at 4°C for up to one month. Avoid repeated freeze-thaw cycles.
<b>Note</b>	For research use only
<b>Isotype</b>	Rabbit IgG
<b>Clonality</b>	Monoclonal
<b>Uniprot ID</b>	<b>O43186</b>
<b>Dilution Range</b>	WB 1:500-1:2000IHC 1:50-1:200
<b>Expiration Date</b>	12 months from date of receipt.



Western blot analysis of CRX using anti-...