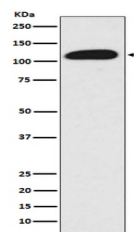


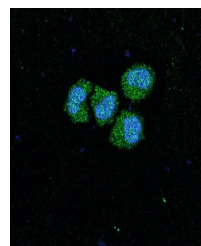
Product Datasheet

SIRT1 Monoclonal Antibody (orb546983)

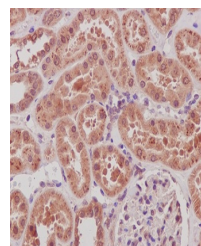
Description	SIRT1 Monoclonal Antibody
Species/Host	Rabbit
Reactivity	Human
Conjugation	Unconjugated
Tested Applications	ICC, IF, IHC, IP, WB
Immunogen	A synthesized peptide derived from human SIRT1 This gene encodes a member of the sirtuin family of proteins, homologs to the yeast Sir2 protein. Members of the sirtuin family are characterized by a sirtuin core domain and grouped into four classes. The functions of human sirtuins have not yet been determined; however, yeast sirtuin proteins are known to regulate epigenetic gene silencing and suppress recombination of rDNA.
Form/Appearance	Liquid
Concentration	Actual concentration vary by lot. Use suggested dilution ratio to decide dilution procedure.
Storage	Store at -20°C for one year. For short term storage and frequent use, store at 4°C for up to one month. Avoid repeated freeze-thaw cycles.
Note	For research use only
Isotype	Rabbit IgG
Clonality	Monoclonal
Uniprot ID	Q96EB6
Dilution Range	WB 1:500-1:2000IHC 1:50-1:200ICC/IF 1:50-1:200IP 1:30
Expiration Date	12 months from date of receipt.



WB analysis of SIRT1 using anti-SIRT1 an...



Immunofluorescent analysis of HeLa cells...



IHC analysis of SIRT1 using anti-SIRT1 a...