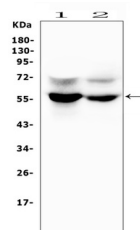


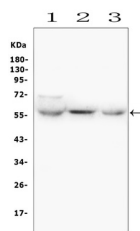
Product Datasheet

GLUT6/SLC2A6 Antibody (orb546396)

Description	GLUT6/SLC2A6 Antibody
Species/Host	Rabbit
Reactivity	Human, Rat
Conjugation	Unconjugated
Tested Applications	ELISA, WB
Immunogen	E.coli-derived human GLUT6/SLC2A6 recombinant protein (Position: M1-R507).
Form/Appearance	Lyophilized
Concentration	Adding 0.2 ml of distilled water will yield a concentration of 500 µg/ml.
Storage	Store at -20°C for one year from date of receipt. After reconstitution, at 4°C for one month. It can also be aliquotted and stored frozen at -20°C for six months. Avoid repeated freeze-thaw cycles.
Note	For research use only
Application notes	Tested Species: In-house tested species with positive results. Other applications have not been tested. Optimal dilutions should be determined by end users. Add 0.2ml of distilled water will yield a concentration of 500ug/ml.
Isotype	Rabbit IgG
Clonality	Polyclonal
MW	55-60 kDa
Uniprot ID	Q9UGQ3
Dilution Range	Western blot, 0.1-0.5µg/ml Direct ELISA, 0.1-0.5µg/ml
Expiration Date	12 months from date of receipt.



WB analysis of SLC2A6 using anti-SLC2A6 ...



WB analysis of SLC2A6 using anti-SLC2A6 ...