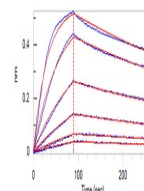


Product Datasheet

Human CTGF / CCN2 Protein (orb545757)

| | |
|--------------------------|--|
| Description | Human CTGF, His Tag is expressed from human 293 cells (HEK293). It contains AA Gln 27 - Ala 349 (Acc... |
| Reactivity | Human |
| Endotoxins | 1.0 EU per µg |
| Conjugation | Unconjugated |
| Target | CTGF |
| Preservatives | Tris with Potassium glutamate and Arginine, pH7.0 |
| Form/Appearance | Powder |
| Storage | -20°C to -70°C for 12 months in lyophilized state; -70°C for 3 months under sterile conditions after reconstitution. For long term storage, the product should be stored at lyophilized state at -20°C or lower. |
| Tag | C-10×His |
| Note | For research use only |
| Application notes | This protein carries a polyhistidine tag at the C-terminus. The protein has a calculated MW of 37.4 kDa. The protein migrates as 36-45 kDa under reducing (R) condition (SDS-PAGE) due to glycosylation. |
| Purity | 90% |
| Source | Human CTGF, His Tag (orb545757) is expressed from human 293 cells (HEK293). It contains AA Gln 27 - Ala 349 (Accession # Q5M8T4-1). |
| MW | 37.4 kDa |
| Uniprot ID | Q5M8T4 |
| NCBI | NP_001892.1 |
| Expiration Date | 6 months from date of receipt. |



Loaded
Monoclonal
Anti-Human
CTGF
Antibo...