

Product Datasheet

Human GM-CSF R alpha Protein (orb545734)

Description GM-CSF R alpha(Granulocyte-macrophage colony-stimulating factor receptor subunit alpha) is also know...

Reactivity Human

Endotoxins 1.0 EU per µg

Conjugation Unconjugated

Target GM-CSF R alpha

Preservatives PBS, pH7.4

Form/Appearance Powder

Storage -20°C to -70°C for 12 months in lyophilized state; -70°C for 3 months under sterile conditions after reconstitution. For long term storage, the product should be stored at lyophilized state at -20°C or lower.

Tag C-10×His

Note For research use only

Application notes This protein carries a polyhistidine tag at the C-terminus. The protein has a calculated MW of 36.4 kDa. The protein migrates as 60-65 kDa under reducing (R) condition (SDS-PAGE) due to glycosylation.

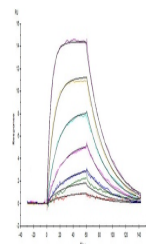
Purity 95%

Source Human GM-CSF R alpha, His Tag (orb545734) is expressed from human 293 cells (HEK293). It contains AA Glu 23 - Gly 320 (Accession # P15509-1).

MW 36.4 kDa

NCBI [NP_006131.2](#)

Expiration Date 6 months from date of receipt.



Human GM-CSF R alpha, His Tag (Cat. No. ...)