

## Product Datasheet

### VDAC1 antibody (orb535101)

## Description

VDAC1 antibody

### Species/Host

Rabbit

### Reactivity

Human

### Conjugation

Unconjugated

### Tested

ELISA, IHC, IP, WB

### Applications

### Immunogen

VDAC/Porin Antibody was prepared from whole rabbit serum produced by repeated immunizations with a synthetic peptide corresponding to an internal region near amino acids 175-200 of Human VDAC1/Porin1.

### Preservatives

0.01% (w/v) Sodium Azide

### Form/Appearance

Liquid (sterile filtered)

### Concentration

sufficient to run 10 immunoblot tests

### Storage

Store vial at 2-8° C prior to opening. May aliquot contents and freeze at -20° C or below for extended storage. Avoid cycles of freezing and thawing. Centrifuge product if not completely clear after standing at room temperature. Dilute only prior to use.

### Note

For research use only

### Application notes

Ready to Use Anti-VDAC/Porin Antibody has been optimized and validated in western blot at 1:1000 dilution. This Anti-VDAC/Porin (RTU) Antibody is sufficient to run 10 western blots. Expect a band approximately 30-33kDa in size corresponding to VDAC/Porin by western blotting in appropriate cell lysate or extract. Although not tested, this antibody is likely functional in ELISA and Immunohistochemistry. Optimal titers for applications should be determined by the researcher.

### Isotype

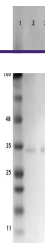
IgG

### Clonality

Polyclonal

### Purity

RTU Anti-VDAC/Porin Antibody is directed against human VDAC1/Porin1 protein. The product was affinity purified from monospecific antiserum by immunoaffinity purification. A BLAST analysis was used to suggest that this antibody would react with VDAC1/Porin1 from a wide range of organisms, including avian, mammalian, aquatic and reptilian sources based on 100% homology for the immunogen sequence. Cross reactivity will occur with all forms of VDACS including VDAC1, VDAC2 (4 isoforms) and VDAC3 (2 isoforms). Such broad reactivity makes this antibody useful as an excellent loading control (mitochondrial).



Western blot analysis of Opal Pre-stained...