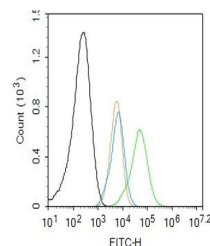


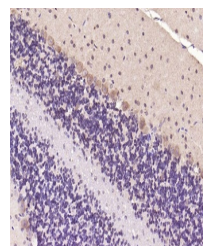
Product Datasheet

Beta Tubulin antibody (orb500779)

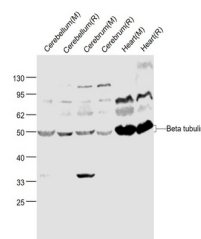
Description	Beta Tubulin antibody
Species/Host	Rabbit
Reactivity	Human, Mouse, Rat
Conjugation	Unconjugated
Tested Applications	FC, IHC-P, WB
Immunogen	KLH conjugated synthetic peptide derived from human Beta tubulin (61-160/444 aa)
Target	Beta tubulin
Preservatives	0.01M TBS(pH7.4) with 1% rAlbumin, 0.03% Proclin300 and 50% Glycerol.
Form/Appearance	Liquid
Concentration	1mg/ml
Storage	Maintain refrigerated at 2-8°C for up to 2 weeks. For long term storage store at -20°C in small aliquots to prevent freeze-thaw cycles.
Note	For research use only
Isotype	IgG
Clonality	Polyclonal
MW	55 kDa
Uniprot ID	P07437
Dilution Range	WB=1:500-2000, IHC-P=1:100-500, Flow-Cyt=1µg/Test, IHC-F=1:100-500, IF=1:100-500
Expiration Date	12 months from date of receipt.



Flow cytometry of HL-60.Primary Antibody...



IHC-P analysis of mouse cerebellum using...



Western blot:Cerebellum (Mouse);Cerebell...