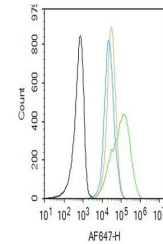


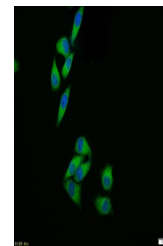
Product Datasheet

JNK1 + JNK3 antibody (orb499914)

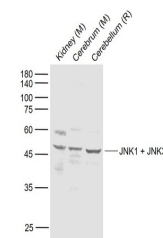
Description	JNK1 + JNK3 antibody
Species/Host	Rabbit
Reactivity	Human, Mouse, Rat
Conjugation	Unconjugated
Tested Applications	ELISA, FC, ICC, IHC-P, WB
Immunogen	KLH conjugated synthetic peptide derived from human JNK1 + JNK3 (211-300/427 aa)
Target	JNK1 + JNK3
Preservatives	0.01M TBS(pH7.4) with 1% rAlbumin, 0.03% Proclin300 and 50% Glycerol.
Form/Appearance	Liquid
Concentration	1mg/ml
Storage	Maintain refrigerated at 2-8°C for up to 2 weeks. For long term storage store at -20°C in small aliquots to prevent freeze-thaw cycles.
Note	For research use only
Isotype	IgG
Clonality	Polyclonal
MW	42 kDa
Uniprot ID	P45983
Dilution Range	WB=1:500-2000, IHC-P=1:100-500, ICC=1:100, Flow-Cyt=1ug/Test, ELISA=1:5000-10000, IHC-F=1:100-500, IF=1:100-500
Expiration Date	12 months from date of receipt.



Flow cytometry of Jurkat.Primary Antibod...



ICC analysis of Hela cell using JNK1 + J...



Western blot:Lane 1:Kidney (Mouse);Lane ...