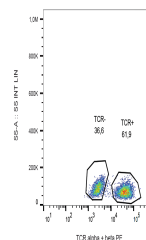


## Product Datasheet

### TCR alpha antibody (PE) (orb44733)

<b>Description</b>	Mouse Monoclonal to TCR alpha.
<b>Reactivity</b>	Human
<b>Conjugation</b>	PE
<b>Tested Applications</b>	FC
<b>Target</b>	TCR alpha/beta
<b>Preservatives</b>	Stabilizing phosphate buffered saline (PBS), pH 7.4, 15 mM sodium azide
<b>Storage</b>	Store at 2-8°C. Protect from prolonged exposure to light. Do not freeze.
<b>Note</b>	For research use only
<b>Application notes</b>	Flow cytometry: The reagent is designed for analysis of human blood cells using 20 µl reagent / 100 µl of whole blood or 106 cells in a suspension. The content of a vial (2 ml) is sufficient for 100 tests.
<b>Isotype</b>	Mouse IgG1
<b>Clonality</b>	Monoclonal
<b>Purity</b>	Purified antibody is conjugated with R-phycoerythrin (PE) under optimum conditions. Unconjugated antibody and free fluorochrome are removed by size-exclusion chromatography.
<b>Dilution Range</b>	Flow cytometry: The reagent is designed for analysis of human blood cells using 20 µl reagent / 100 µl of whole blood or 106 cells in a suspension. The content of a vial (2 ml) is sufficient for 100 tests.
<b>Expiration Date</b>	12 months from date of receipt.



Flow  
cytometry  
analysis  
(surface  
stainin...